



**User's Manual**

**M8NF**



# Table of contents

<b>Maintenance</b>	<b>3</b>
Important safety instructions for installation	3
Important safety instructions for use	3
Use of the equipment	3
<b>Technical Data</b>	<b>4</b>
<b>Connection</b>	<b>5</b>
<b>Installation</b>	<b>6</b>
Installation with support	6
Installation without support	6
Door Positioning	6
<b>Programming</b>	<b>7</b>
Radio Manual Porgramming	7
Total Reset	7
<b>Safety devices programming</b>	<b>8</b>
RadioBand3 / RadioSens3 Transmitter Programming in RSEC3 Receiver	8
Adjust the sensibility and inhibition point	8
<b>Maneuver programming</b>	<b>9</b>
Programming the door maneuver without RadioSens3 system	9
Programming the door maneuver with RadioSens3 system	10
<b>Notes</b>	<b>11</b>
<b>Regulatory Data</b>	<b>12</b>
EU Declaration of conformity	12

# Maintenance

## Important safety instructions for installation



Disconnect the power supply whenever you proceed to the installation or repair of the control panel.

- The panel must be installed while the power is disconnected.
- Before installing the panel, remove all unnecessary ropes or chains and disable any equipment such as locks that is not necessary for the automatic operation.
- Before installing the panel, check that the door is in good mechanical condition, correctly balanced and that it opens and closes correctly.
- Install the manual unlocking device at a height lower than 1.8m.
- Install any permanent control next to the door away from any moving part and at a minimum height of 1.5m.
- For permanently connected equipment, an easily accessible power disconnection device must be incorporated into the wiring. It is recommended that this be of the emergency switch type.
- If the control panel is supplied without emergency stop button, this will be incorporated in the installation, connecting it to the STOP terminal.
- For correct use of the security edge, this must never be activated when the door is fully closed. It is wise to install the ends of run before activating the edge.
- This equipment can only be handled by a specialist fitter, by maintenance staff or by a suitably trained operator.
- To connect the power supply and motor wiring, 2.5 mm<sup>2</sup> section terminals must be used.
- Use protective goggles when handling the equipment.
- Fuses must only be handled when the appliance is disconnected from the mains.
- The instructions for using this equipment must remain in the possession of the user.
- European door normative EN 12453 and EN 12445 specify the following minimum protection and door safety levels:
  - for single-family dwellings, prevent the door from making contact with any object or limit the force of contact (e.g. safety band), and in the case of automatic closing, it is necessary to complement this with a presence detector (e.g. photocell).
  - for communal and public installations, prevent the door from making contact with any object or limit the force of contact (e.g. safety band), and complement this with a presence detector (e.g. Photocell).

## Important safety instructions for use

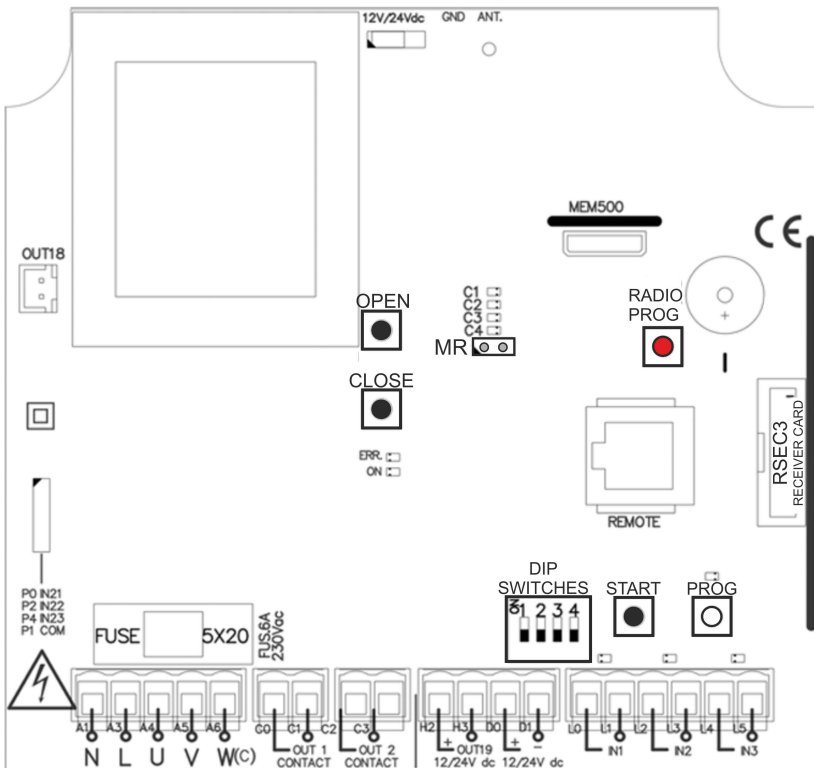
- Do not allow children to play with the door controls.
- Keep the remote controls out of the reach of children.
- Watch the door movement and keep people away until the door is fully open or closed.
- Precaution when operating the manual unlocking device, as the door may suddenly fall due to the bad condition of the springs or door unbalance. Details on how to use the manual unlocking device must be provided by the manufacturer or the device installer.
- Examine the installation frequently, especially the cables, springs and supports, to detect signs of wear, damage or unbalance. Do not use the door if repair work or adjustments are required, as this may cause damage.

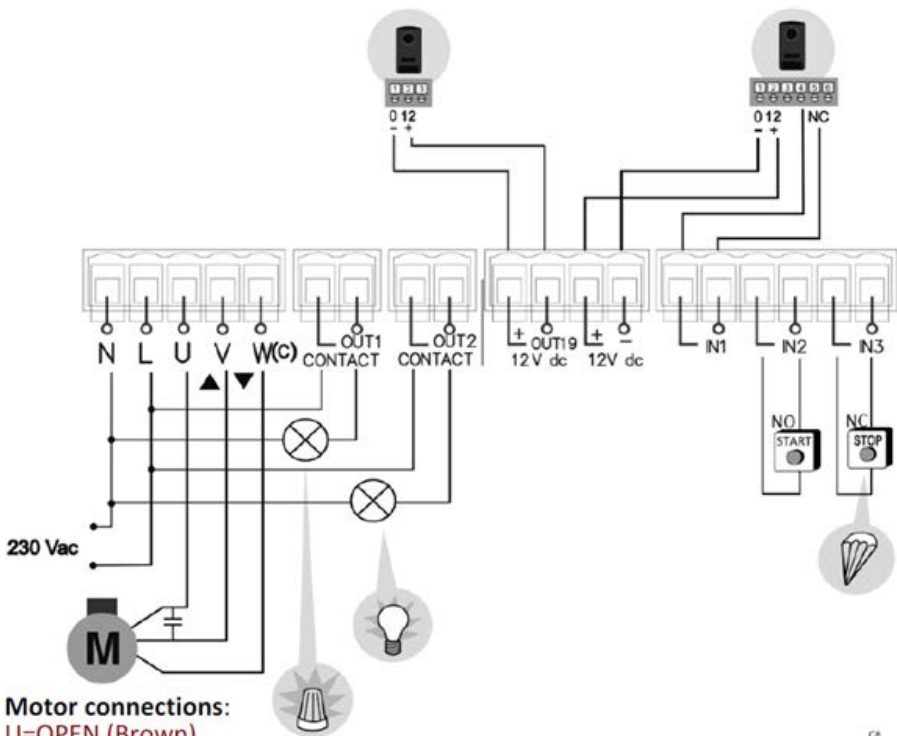
## Use of the equipment

Designed for automation of garage doors, in accordance with the general description. Not guaranteed for other uses. The manufacturer reserves the right to alter equipment specifications without prior notification.

# Technical Data

Parameter	Value
Frequency	868,35 MHz
Codification	High security rolling code
Memory	27 codes (expandable to 500 codes with memory card)
Power supply	230Vac ±10%
Maximum motor power	750W / 1200W (intensive use / residential use)
Standby / operating consumption	23mA / 43mA
Motor fuses	6A
Optional cards	RSEC3 + MEM 500 + V-XPAN + TL-CARD-V
Free voltage output	2 outputs
12Vdc output	1 fix (100mA) + 1 configurable (100mA)
Manoeuvre time	1 second – 6 minutes
Operating temperature	-20°Cto +55°C
Watertightness	IP32
Size	180 x 152 x 88mm





## Installation

UNSCREW



OPEN TOP



DRILL WALL



## Door Positioning

PRESS WHITE PROG  
BUTTON FOR 2 SECS



PRESS & HOLD CLOSE



DOOR CLOSES

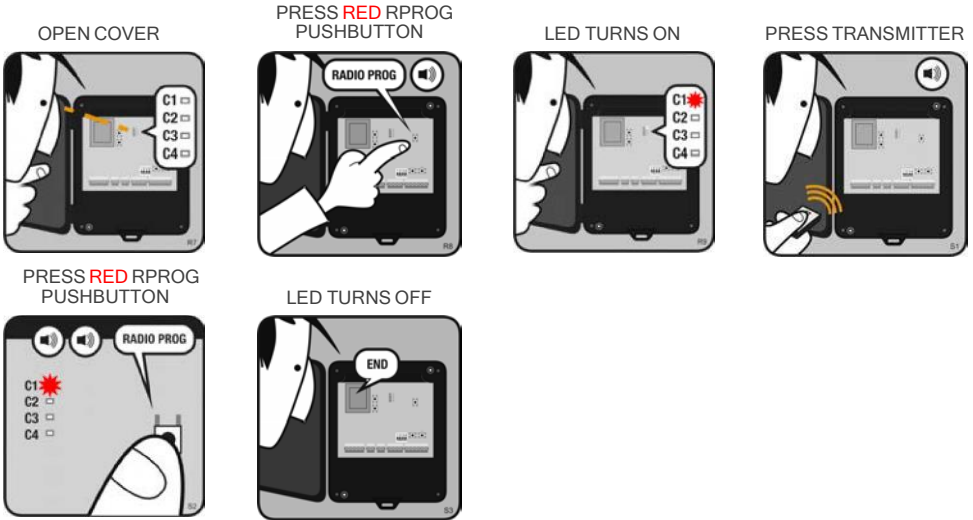


DOOR CLOSED



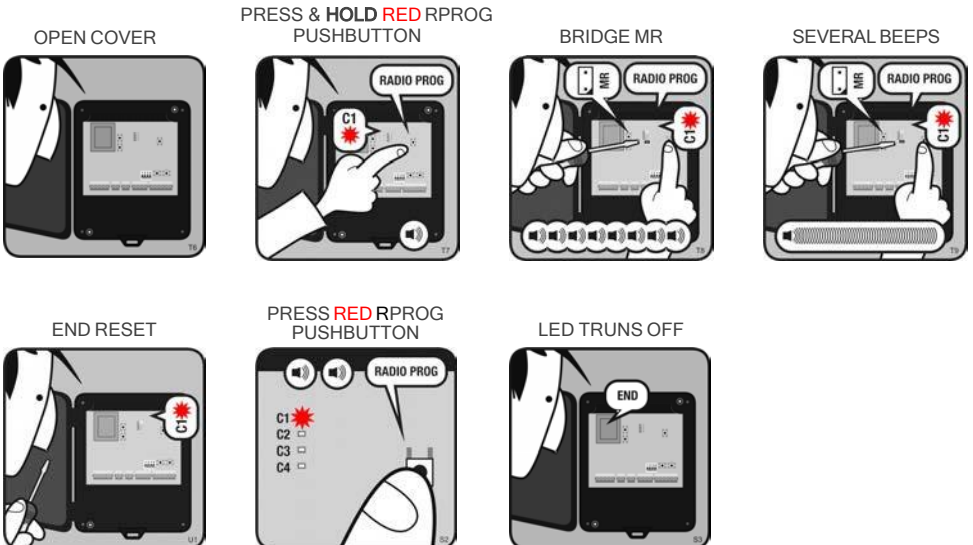
# Programming

## Radio Manual Programming (Remote controls, wireless buttons, etc)



NOTE: To program transmitters onto different channels, press and hold the red RADIO PROG pushbutton until the LED for that channel turns on, then release the RADIO PROG pushbutton and press the transmitter.

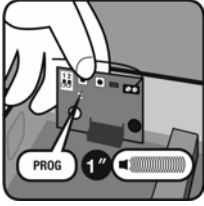
## Total Reset



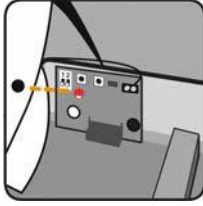
# Safety devices programming (IF USING)

## RadioBand3 / RadioSens3 Transmitter Programming in RSEC3 Receiver

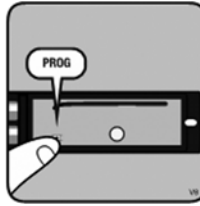
PRESS BLUE PROG  
BUTTON OF THE  
PLUGGABLE CARD RSEC3



LED TURNS ON



PRESS PROG  
TRANSMITTER



ONE BEEP AND  
PROGRAMMED



PRESS BLUE PROG  
BUTTON



LED TURNS OFF AND END  
PROG



SLIDE THE COVER TO  
CLOSE



## Adjust the sensibility and inhibition point

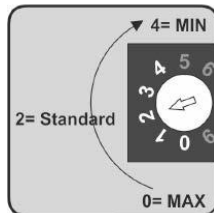
In order to adapt the operation of the system to the irregular conditions of the floor, the equipment can be inhibited the lasts 4cm at the end of the travel of the door. In the inhibition zone, obstacles will not be detected

Setting the inhibition point is optional. In case it is desired, it can be fixed in two ways: automatically or manually.

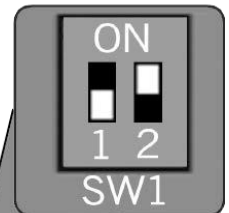
If the inhibition point is set automatically, put the transmitter switch SW1: 2 to ON. During the programming of the maneuver the equipment will automatically detect the ground and set the inhibition point automatically.

If the inhibition point is set manually, proceed as defined in the control manual section: [Maneuver programming: Programming the door maneuver with RadioSens3 system.](#)

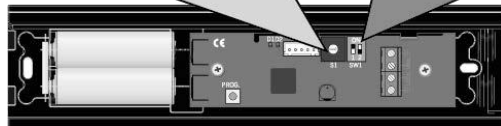
### ADJUST SENSIBILITY



### INHIBITION POINT



On the RadioSens3 transmitter, the sensitivity can be adjusted. If sensitivity is modified, the RadioSens3 transmitter must be reprogrammed. You must require the entire system to comply with the safety standards to which it is subject.

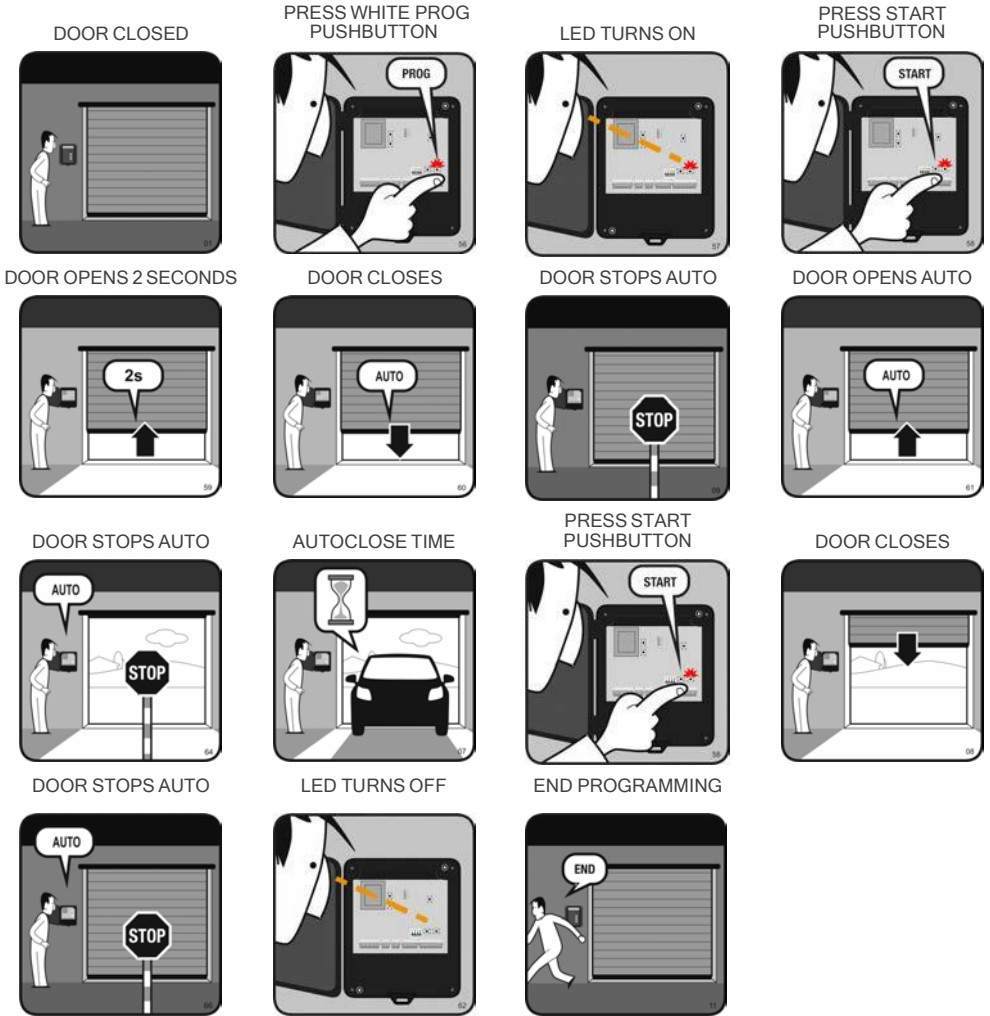


Attention: Only one system (RadioBand3 or RadioSense3) can be programmed in the RSEC3 receiver.



# Maneuver programming

## Programming the door maneuver **without** RadioSens3 system



## Programming the door maneuver with RadioSens3 system



**\*INHIBITION ZONE:**

Optionally press START to set inhibition point. From this point to the closing edge, the safety device will be inhibited. The inhibition zone must comply with the safety standards, it must be less than 40mm from the floor.



## EU Declaration of conformity

**JCM Technologies** hereby declares that the product **M8NF** complies with the relevant fundamental requirements of the RED Directive 2014/53/EU, as well as with the Machine Directive 2006/42/EC whenever its usage is foreseen; and with the 2011/65/EU RoHS Directive.

See website [www.jcm-tech.com/declarations/](http://www.jcm-tech.com/declarations/)

JCM TECHNOLOGIES, SA  
C/COSTA D'EN PARATGE, 6B  
08500 VIC (BARCELONA)  
SPAIN

