

# Microwave Motion Sensor (Uni-directional) HR50-Uni

## Instruction Manual HOTRON LTD.

CE 2150

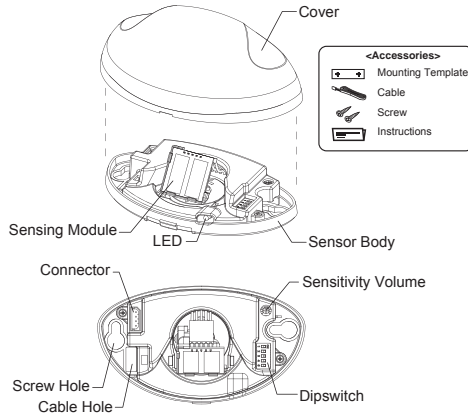
The HR50-UNI is a high performance motion detection sensor specifically designed for the activation of automatic doors.  
For the safe and accurate use of this product, please read this instruction manual carefully.



### 1 Technical Specifications

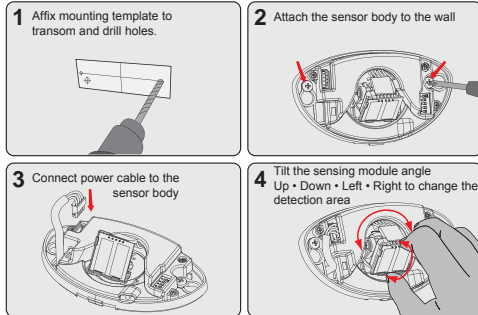
Power supply : DC 12~30V, AC 12~24V  
 Product Size : 120mm x 70mm x 41.5mm(W x L x H)  
 Microwave module : 24.125GHz  
 Hold time : 1.2 Sec.  
 Detecting field: 5m x 3m (W x D) (Height 2.2m)  
 Current consumption : < 1.4W  
 Contact capacity : 1A/24VDC  
 Max install height : 4.0m  
 Operating Temp/Humidity : -20°C~60°C(0~90%)  
 International Protection : IP54

### 2 General Information

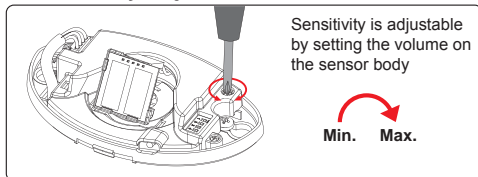


### 3 Installation Guide

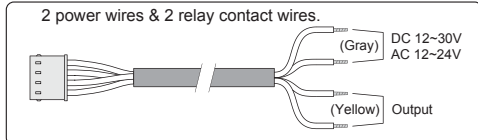
⚠ Do not supply power during installation.  
Do not disassemble or modify the device, it may cause fire or electric shock



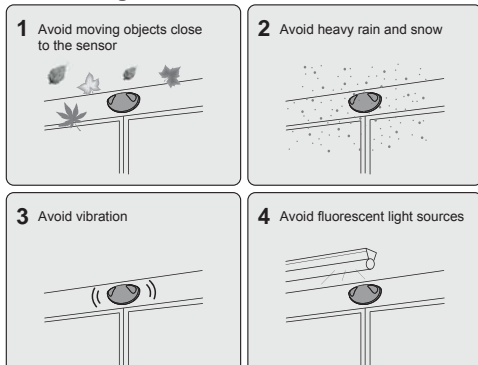
### 4 Sensitivity Adjustment



### 5 Wiring Diagram



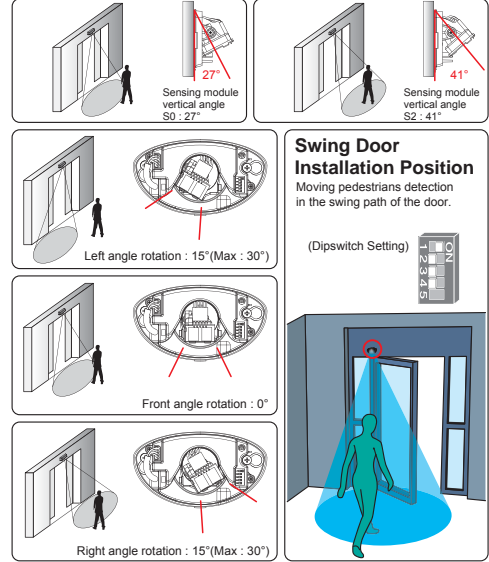
### 6 Mounting Information



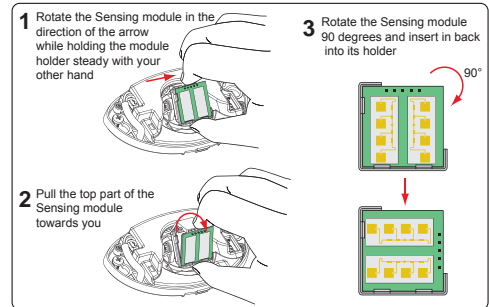
NOTE The specifications of this product can be changed without prior notice

### 7 Detection Area Position Adjustment

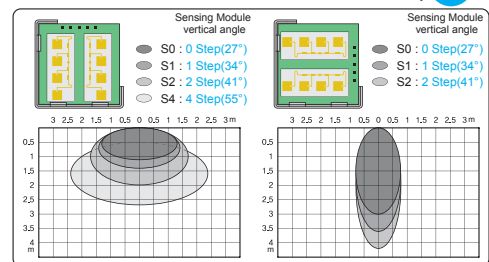
Adjust the Sensing module up and down to achieve a detection area close to or far from the door.  
Adjust the Sensing module to the right and left to achieve the desired side approach detection area.



### 8 Wide or Narrow Detection Area Adjustment



### 9 Detection Field (Mounting Height : 2.2m)



### 10 Dipswitch Setting (Default Dipswitch Setting NO. : 2)

| NO. | Dip Switch | Direction | Turtle Mode | NO. | Dip Switch | Direction | Turtle Mode |
|-----|------------|-----------|-------------|-----|------------|-----------|-------------|
| 1   | [ON]       | [ON]      | [OFF]       | 5   | [ON]       | [ON]      | [OFF]       |
| 2   | [ON]       | [ON]      | [ON]        | 6   | [ON]       | [ON]      | [ON]        |
| 3   | [ON]       | [ON]      | [ON]        | 7   | [ON]       | [ON]      | [ON]        |
| 4   | [ON]       | [ON]      | [ON]        | 8   | [ON]       | [ON]      | [ON]        |
| 9   | [ON]       | [ON]      | [ON]        |     |            |           |             |
| 10  | [ON]       | [ON]      | [ON]        |     |            |           |             |
| 11  | [ON]       | [ON]      | [ON]        |     |            |           |             |

Turtle mode (slow speed detecting mode) Relay holding time 1 unit is 1 second

### 11 Weather Cover (sold separately)

