

©Input Volt.: AC/DC 12-250V(Full Range-Universal)

## Features

- Normally close relay output
- PC casing, anti fog / dew/ rains
- IP-66 water proof
- Round shape reflector included
- Wrap around mounting bracket
- Input Volt.: Full range (AC/ DC 12~250V)
- 2 LED indicators for power and beam alignment
- Optional Hood for reflector

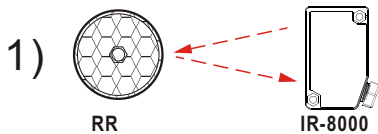
## Applications

- Gateopener
- Overhead door
- Swing gate
- Sliding door
- Internal / External protection
- Window
- Terrace
- Warehouse
- Parking lot
- Conveyor

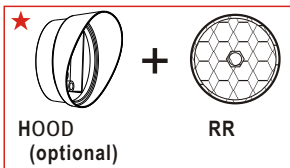
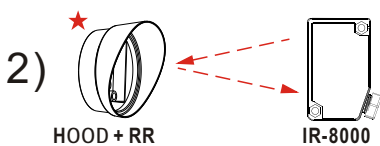
## Specifications

Detection Method	Retro-Reflection (N.C.)	
Item No.	IR-8000	
Supply Volt.	AC / DC 12~250V ±10%	
Response Time	10 msec.	
Sensing Range	10m	
Emitting Element	IR LED	
Beam Alignment	Red Led Indicator(when powered)	
Led Indicator	Beam Alignment : On / Beam Broken : Off	
Power Led Indicator	Red Led Indicator	
	When Powered: Red Led On	Power Off: Red Led Off
Dimensions	20mm(w) × 63mm(h) × 39mm(d)	
Current Drain	80mA Maximum	
Ouput Method	SPDT Relay output	
Switching Capacity	3A / 125VAC	
Illumination	Lamplight <10,000 Lux ; Sunlight<30,000 Lux	
Connection Method	Calbe wires: Brown / Blue / White / Black / Gray	
Noise Resistance	1500Vp-P / 1 Us	
Housing Material	Case: ABS ; Lens: PC	
Operating Temp.	-4°F to 131°F(-20°C to 55°C)	
Water Proof	IP-66	
Safety Standard	CE / RoHS	



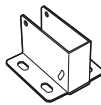
## Collections



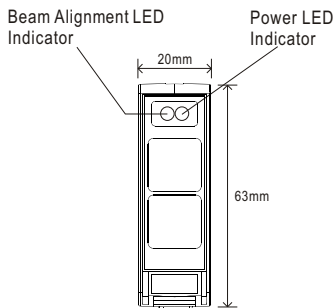
or



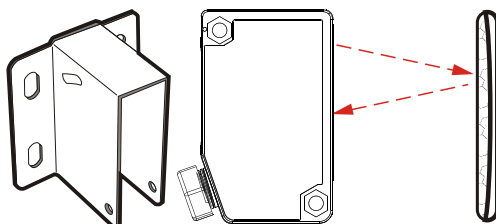
## Accessories

1. RR	2. HOOD (optional)	3. MB
		
<p>1. RR: Round shape reflector / Diameter: 80mm                  2. HOOD: Water / Dust Proof Hood for reflector                  3. MB: Wrap around mounting bracket</p>		

## Front View

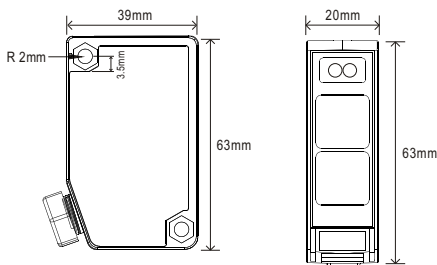


## Side View

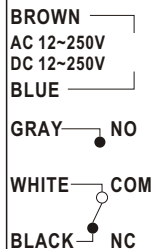


(Sensor / Reflector / Mounting Bracket)  
 Cable wire length: 3 meters

## Dimensions



## Wiring Connection Diagram



Brown: Input power-non polarity  
 Blue: Input power-non polarity  
 Gray: Normally open  
 White: Common  
 Black: Normally close