



C Prox Ltd (Inc Quantek)

11 Callywhite Business Park, Callywhite Lane, Dronfield S18 2XP
+44(0)1246 417113 sales@cproxltd.com www.quantek.co.uk

CPWIFISW2-TX KIT

Features:

- Connects to the home WiFi
- Open door/gate remotely through the App
- Works with Smart Life App
- Manage multiple smart switches and other Smart Life compatible smart devices from one App
- Compatible with Amazon Alexa, Google Assistant & Siri (via Shortcuts)
- Set schedules and timers
- Share access with other users permanently or for a set time period
- Remove access to other users instantly
- Up to 100 metre range between WiFi switch and receiver

WiFi Switch specification:

- Power supply: 7-32Vac/dc or 5V Micro-USB
- WiFi standard: 2.4GHz
- Transmission frequency: 868MHz
- Dimensions: 73 x 46 x 30mm

Receiver specification:

- Power supply: 12-24Vac/dc
- Normally open relay output to trigger door/gate
- Can also learn other Quantek remote controls
- Dimensions: 89 x 56 x 21mm



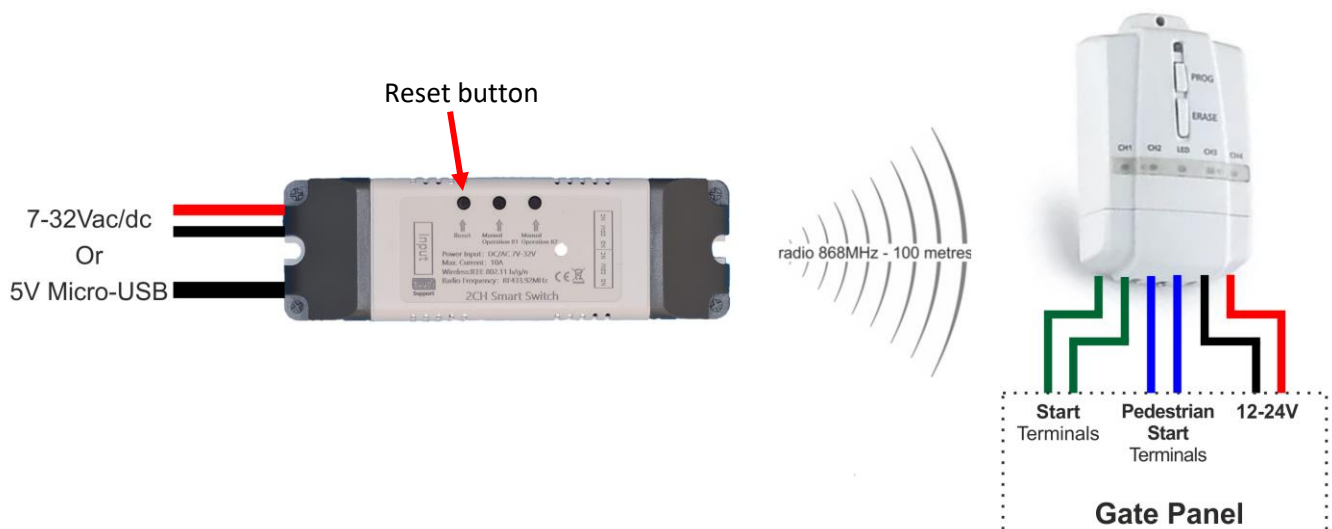
Device setup

1. Download the 'Smart Life' App by searching in the mobile App stores or scanning the following QR codes.

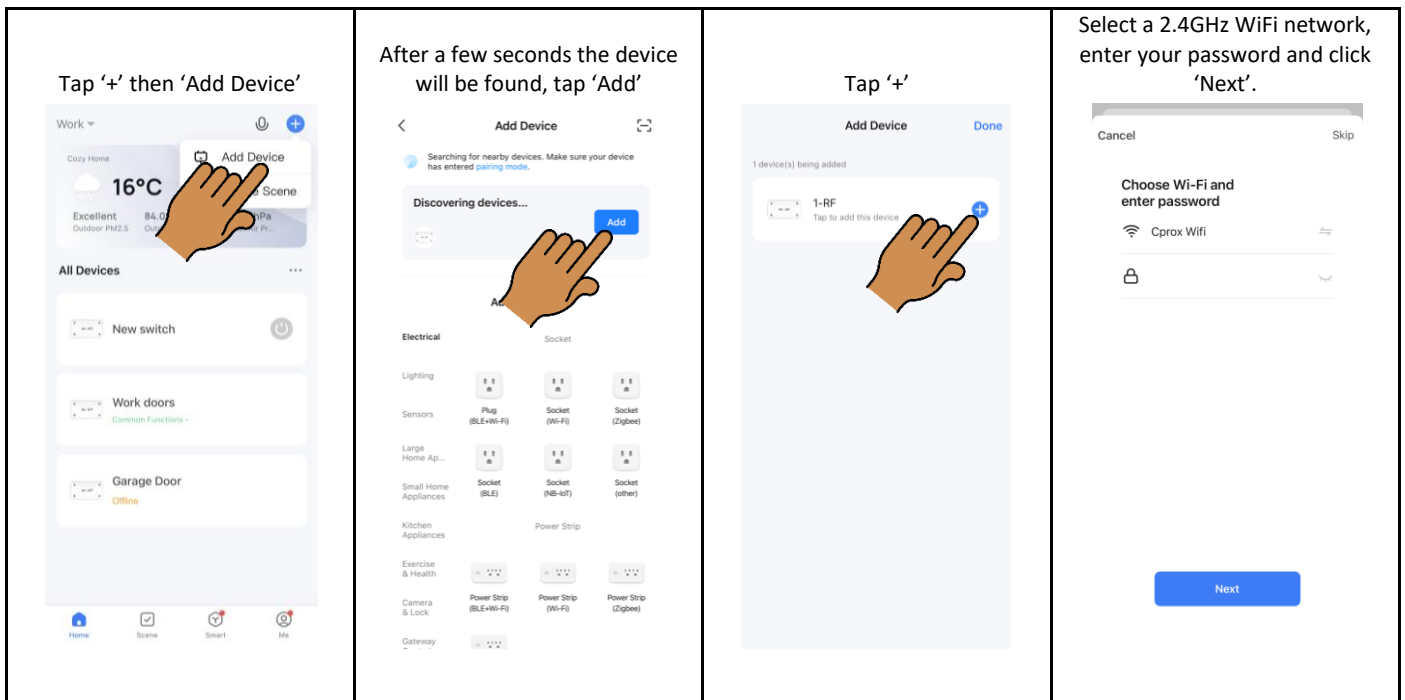


Smart Life App

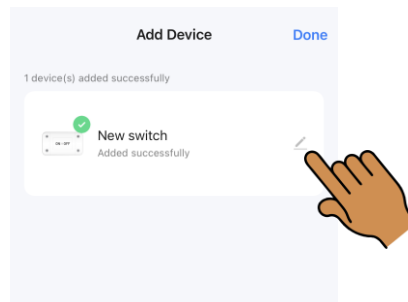
2. Create an account in the App, or if you already have an account just login.
3. Use a flat screwdriver to prise off the left hand dark grey end cover.
4. Supply power to the smart switch and position it at the front of the house with best line of sight to the gate.
5. Supply power to the RX-T receiver and connect relay outputs to the activate terminals of the door/gate.
6. Reset the smart switch by pressing the reset button for 5 seconds until the red network LED indicator is flashing quickly every 0.5 seconds (if the network indicator is already flashing quickly, skip this step).



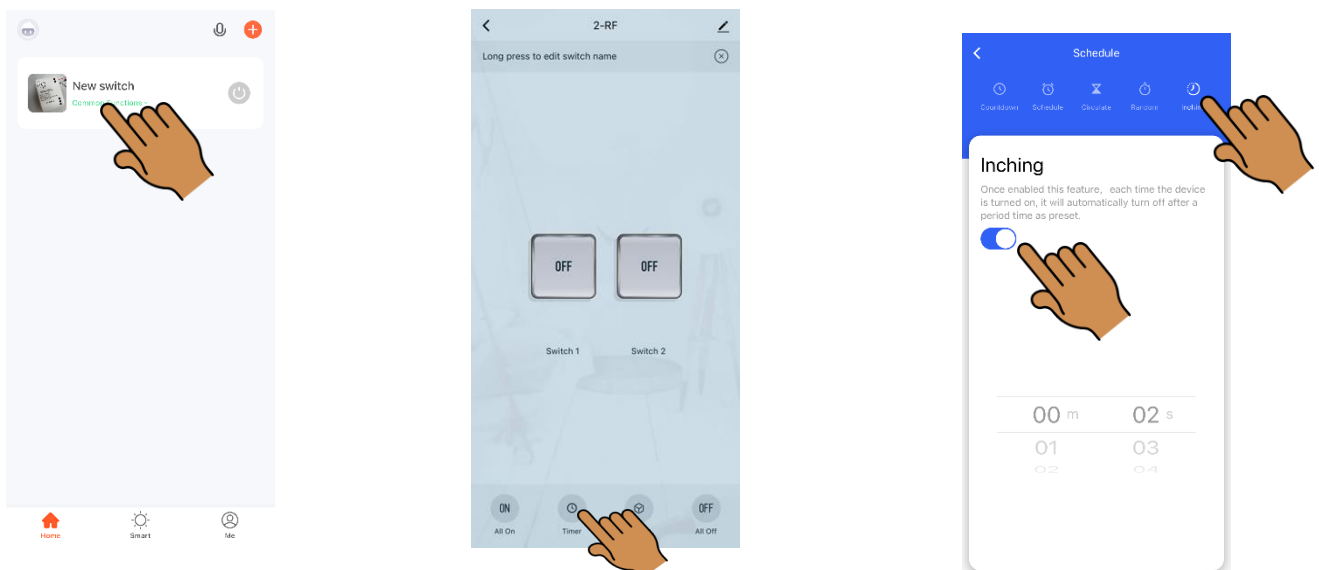
7. Add & connect the device in the App



8. Name the device.



9. Set both outputs to inching mode – 2 seconds



10. Tap the On/Off buttons on the App to switch the device.



When the network is disconnected, the switch will automatically change to Bluetooth control from the phone. (Must be within range).

The smart switch and receiver come pre-programmed. If you need to program again for any reason, press P1 or P2 button on receiver for 2 seconds, within 10 seconds press the corresponding manual operation button on the WiFi switch.

Share device with other users

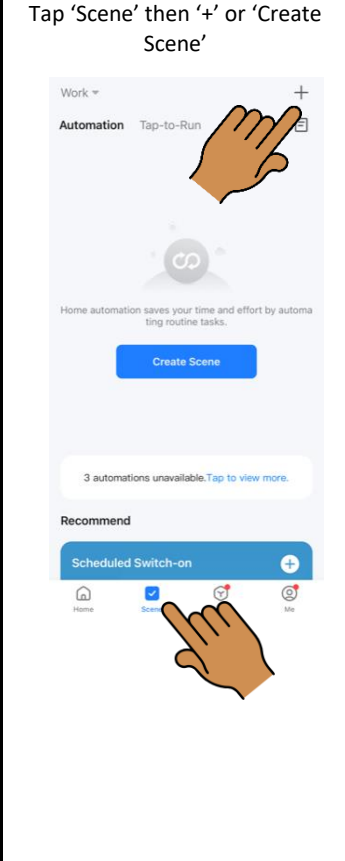
Other users must have a Smart Life account

	<p>Tap 'Share Device'</p>	<p>Tap 'Add Sharing'</p>	<p>Tap 'Share with the Account Smart Life'.</p>
--	---------------------------	--------------------------	---

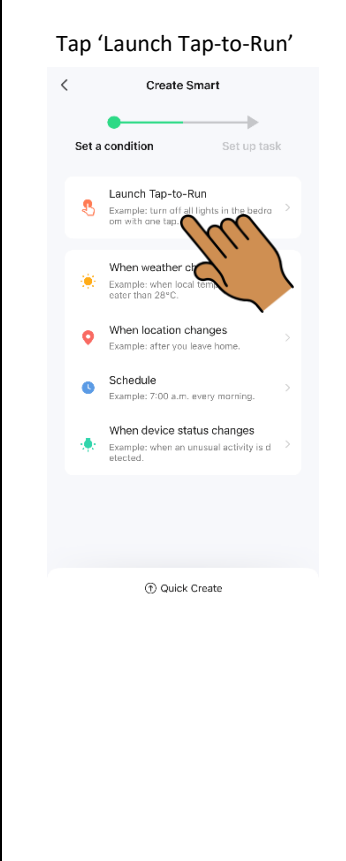
<p>Enter the email or phone number of the account you want to share with and click 'Done'</p>	<p>Tap on the name of the account you have shared with</p>	<p>Then you can set a validity period (if required) or unshare the device</p>
---	--	---

Create smart scenes and setup Siri

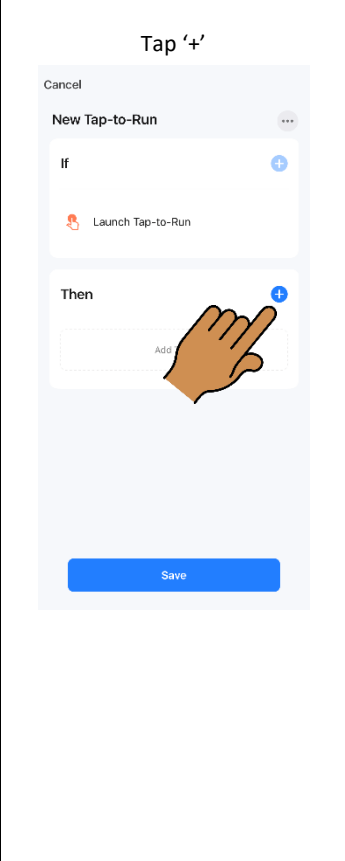
Tap 'Scene' then '+' or 'Create Scene'



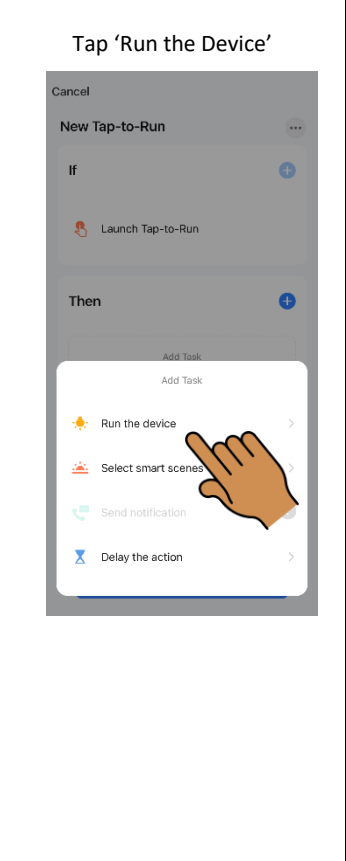
Tap 'Launch Tap-to-Run'



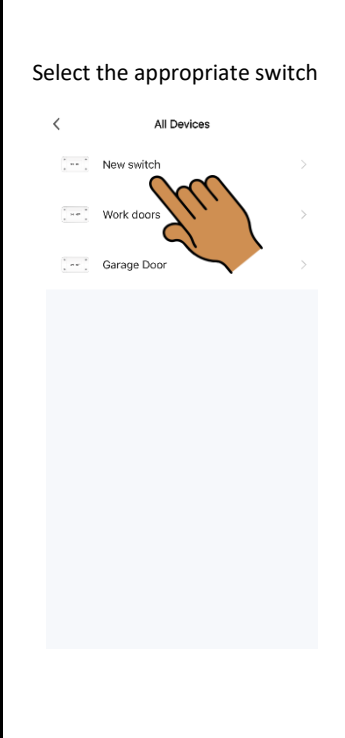
Tap '+'



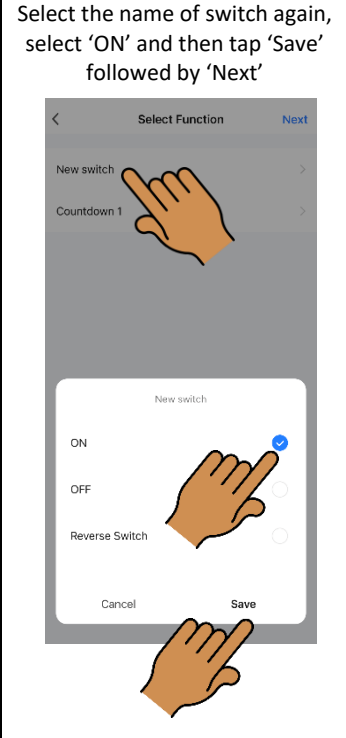
Tap 'Run the Device'



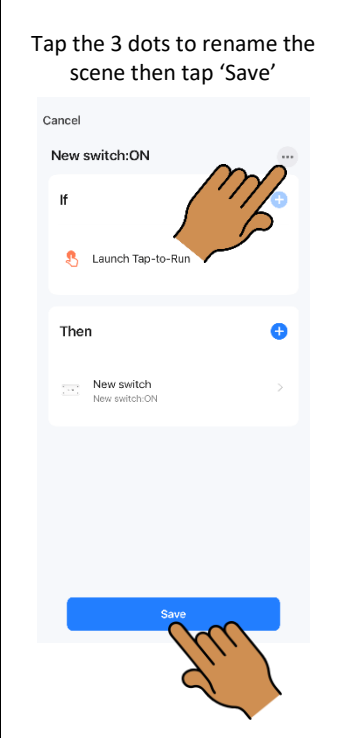
Select the appropriate switch



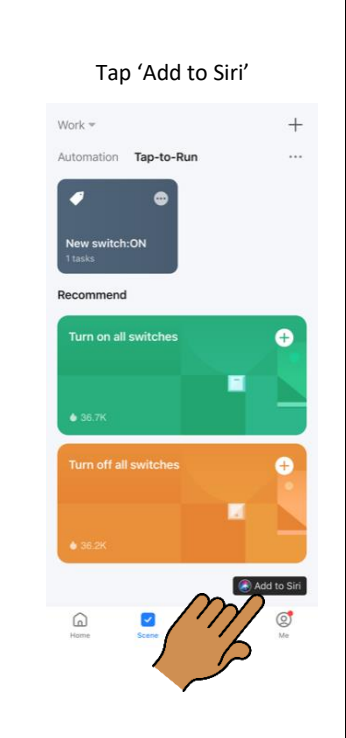
Select the name of switch again, select 'ON' and then tap 'Save' followed by 'Next'

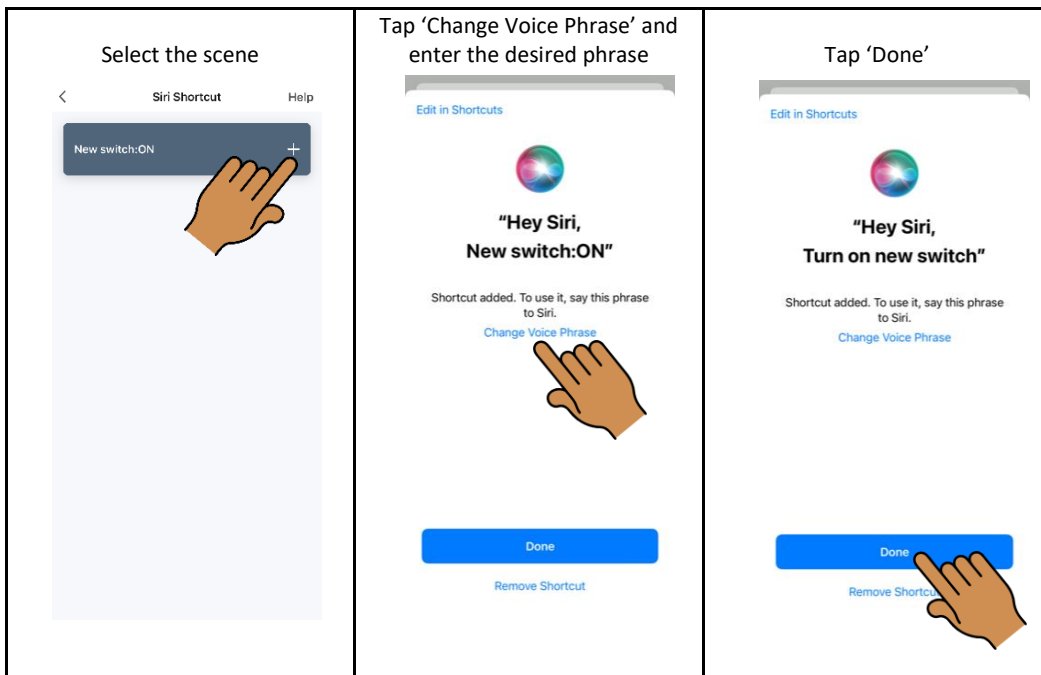


Tap the 3 dots to rename the scene then tap 'Save'



Tap 'Add to Siri'





Please note, to use with Siri on other phones, you must share the 'Home' with other accounts, rather than just the device.

Tap 'Me' > 'Home Management' > Select the name of the Home > 'Add Member'

Please also make sure that the 'Shortcuts' App is downloaded on the phone.

Setup Alexa

The first panel shows a hand tapping a 'New switch' card in the Smart Life app. The second panel shows a hand editing the switch name from '2-RF' to 'New switch'. The third panel shows a hand tapping the 'Settings' icon in the switch's configuration menu. The fourth panel shows the 'ACCOUNT LINKING' screen where a hand taps the 'LINK' button to connect the Smart Life account with Alexa.

The first panel shows a hand tapping the 'All Devices' tab in the Alexa app. The second panel shows a hand tapping the 'New switch' device in the 'ALL DEVICES' list. The third panel shows a hand tapping the 'Create a Routine' button in the 'NEW SWITCH' configuration screen. The fourth panel shows a hand tapping the '+' icon to create a new routine in the 'ROUTINES' section.

Name the routine. Then tap 'When this Happens'

Cancel NEW ROUTINE Save

NAME

Open Gate Change

When this happens
e.g. you say "Alexa"

Add action
e.g. Play weather

Tap 'Voice' and enter the desired voice command. Then tap 'Next'

< WHEN THIS HAPPENS

Voice

Schedule

Smart Home

Alarms

Sound Detection (public preview)

Tap 'Add Action'

Cancel NEW ROUTINE Save

NAME

Open Gate Change

WHEN:

Alexa, Open gate
[View/Edit](#)

Add action
e.g. Play weather

Tap 'Smart Home'

< ADD NEW

Customised
For more actions, type in what you would ask Alexa to do

Smart Home

Alexa Says

Audible

Calendar

Calling

Date and Time

Device Settings

Fire TV

Tap 'All devices'

< SMART HOME

All Devices

Lights

Control scene

Tap the name of the switch

< SELECT DEVICE

AVAILABLE

Front door

Garage Door

Light

New switch

Slider

TV

Work doors

Tap 'Power – ON' then 'Next'

< NEW SWITCH Next

Power

On

Off

Save your routine

Cancel NEW ROUTINE Save

NAME

Open gate Change

WHEN:

Alexa, Open gate
[View/Edit](#)

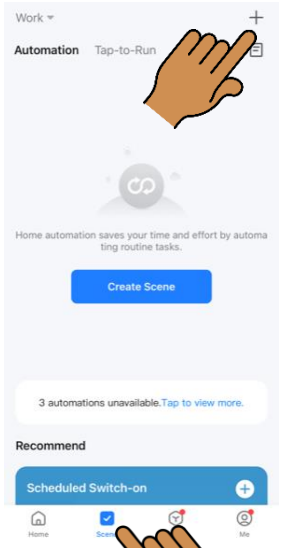
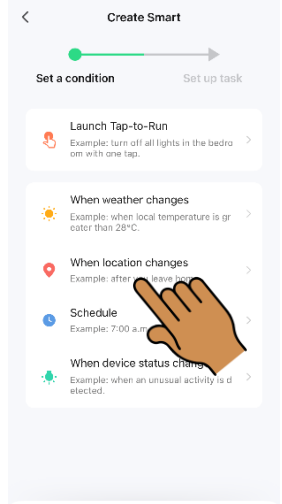
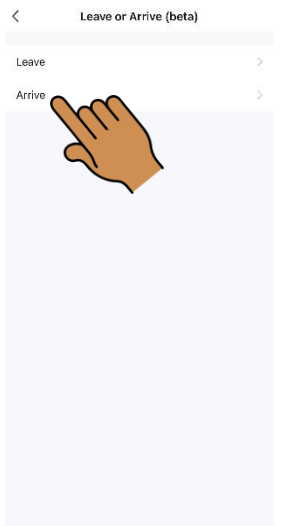

ALEXA,

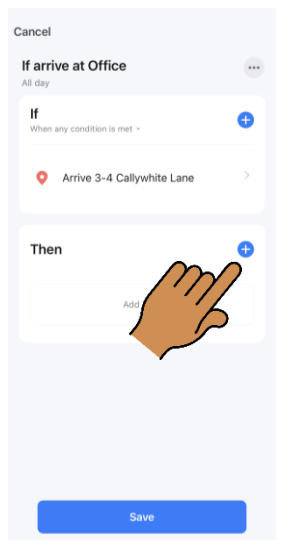
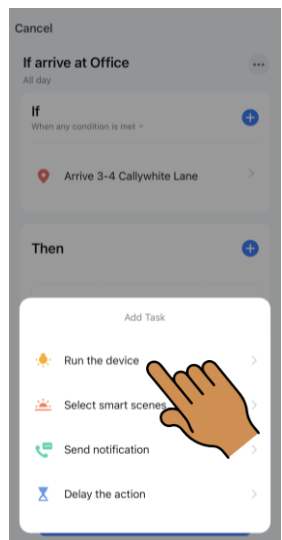
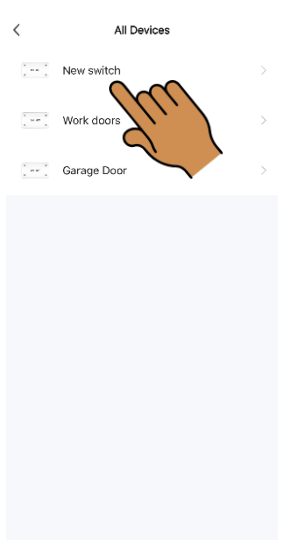
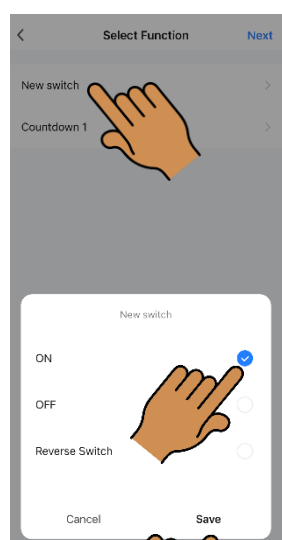
Add action +

New switch
Power: On

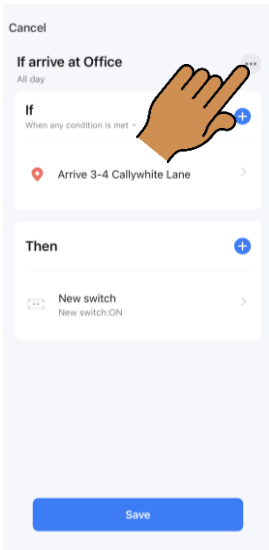
Open the gate/door automatically when you get home

Please note this feature is a Beta service and requires location services to be on all the time.

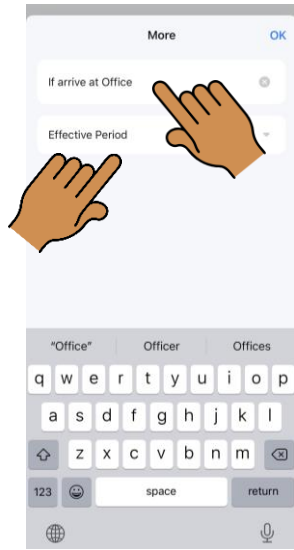
<p>Tap 'Scene' then '+' or 'Create Scene'</p> 	<p>Tap 'When location changes'.</p> 	<p>Tap 'Arrive'.</p> 	<p>Select location. Zoom in or out to adjust activation radius. Tap 'OK'.</p> 
---	---	---	---

<p>Tap '+'</p> 	<p>Tap 'Run the Device'</p> 	<p>Select the appropriate switch</p> 	<p>Select the name of switch again, select 'ON' and then tap 'Save' followed by 'Next'</p> 
--	---	---	--

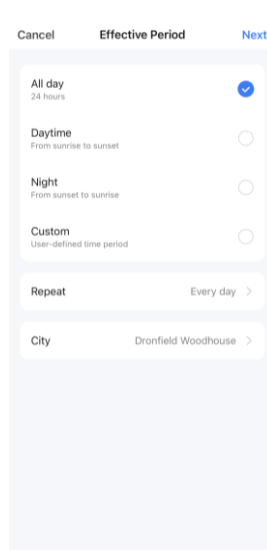
Tap the 3 dots



Rename the scene and choose the effective period (if required)



Choose and tap 'Next'



Tap 'Save'

