

Safety devices programming

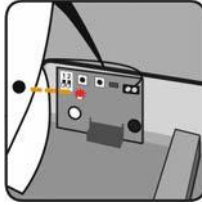
RadioBand3 / RadioSens3 Transmitter Programming in RSEC3 Receiver

PRESS  PROG
BUTTON OF THE
PLUGGABLE CARD RSEC3

LED TURNS ON

PRESS PROG
TRANSMITTER

ONE BEEP AND
PROGRAMMED



PRESS  PROG
BUTTON

LED TURNS OFF AND END
PROG

SLIDE THE COVER TO
CLOSE

Adjust the sensibility and inhibition point

In order to adapt the operation of the system to the irregular conditions of the floor, the equipment can be inhibited the lasts 4cm at the end of the travel of the door. In the inhibition zone, obstacles will not be detected

Setting the inhibition point is optional. In case it is desired, it can be fixed in two ways: automatically or manually.

If the inhibition point is set automatically, put the transmitter switch SW1: 2 to ON. During the programming of the maneuver the equipment will automatically detect the ground and set the inhibition point automatically.

If the inhibition point is set manually, proceed as defined in the control manual section: [Maneuver programming: Programming the door maneuver with RadioSens3 system.](#)

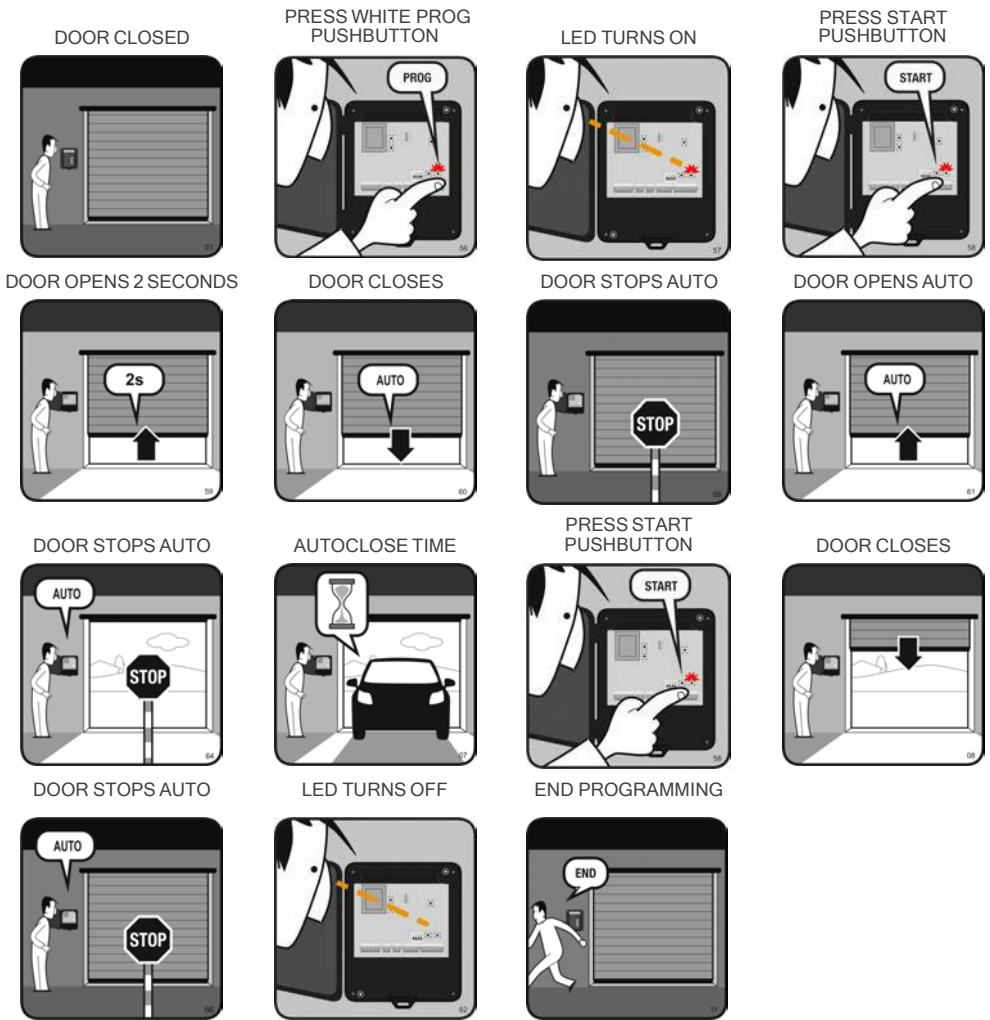


On the RadioSens3 transmitter, the sensitivity can be adjusted. If sensitivity is modified, the RadioSens3 transmitter must be reprogrammed. You must require the entire system to comply with the safety standards to which it is subject.

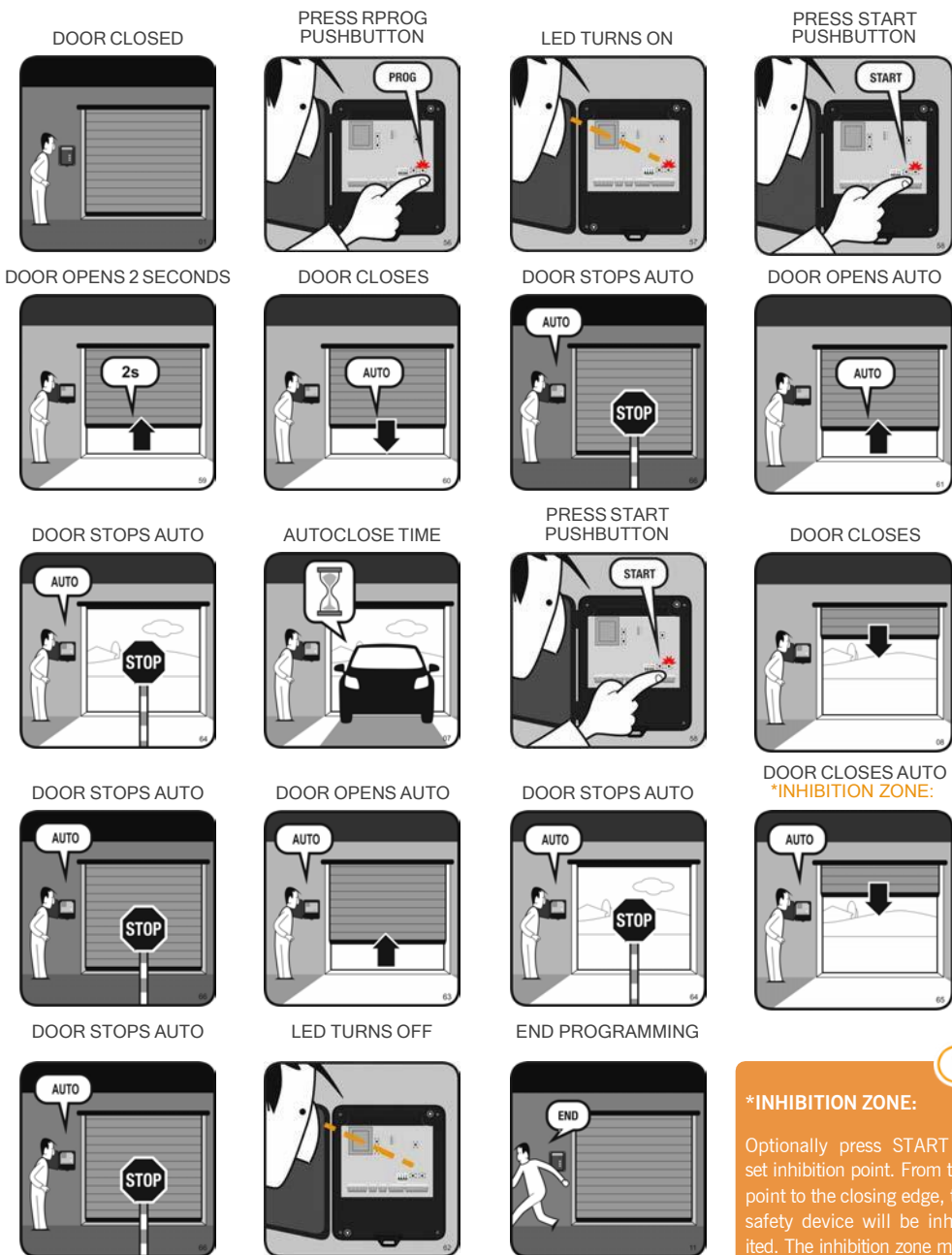
Attention: Only one system (RadioBand3 or RadioSense3) can be programmed in the RSEC3 receiver.

Maneuver programming

Programming the door maneuver without RadioSens3 system



Programming the door maneuver with RadioSens3 system



***INHIBITION ZONE:**

Optionally press START to set inhibition point. From this point to the closing edge, the safety device will be inhibited. The inhibition zone must comply with the safety standards, it must be less than 40mm from the floor.

EU Declaration of conformity

JCM Technologies hereby declares that the product **M8NF** complies with the relevant fundamental requirements of the RED Directive 2014/53/EU, as well as with the Machine Directive 2006/42/EC whenever its usage is foreseen; and with the 2011/65/EU RoHS Directive.

See website www.jcm-tech.com/declarations/

JCM TECHNOLOGIES, SA
C/COSTA D'EN PARATGE, 6B
08500 VIC (BARCELONA)
SPAIN

