

Fail Safe Electric Strike lock for Glass Door



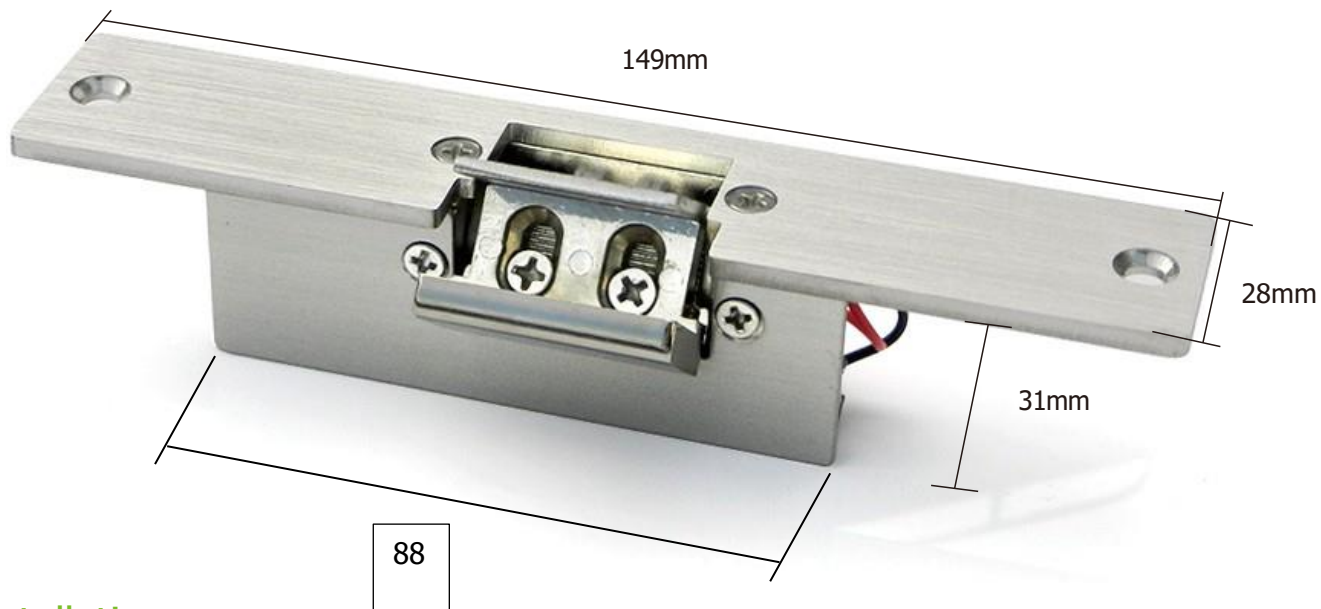
CP135

Specifications

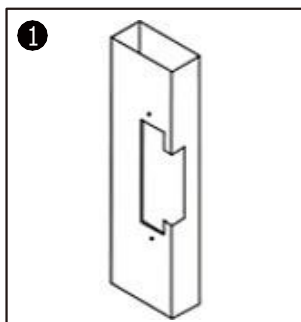
Lock Size	149x28Wx31H(mm)
Strike Structure	Stainless Steel
Holding Force	250kg
Voltage	DC12V
Current	240mA(ES-140A), 120mA(ES-140B)
Feature	Locked when energized
Surface Temperature	Within +20°C
Suitable Temperature	-10°C~25°C(14°F-131°F)
Faceplate Housing	Painted Steel
Function	Built-out MOV
Glass Thickness	8-12mm
Suitable For	Glass Door
Opening Model	90 Degree Swinging Door
Weight	0.4kg
Standard Packing	60pcs/box

Dimensions

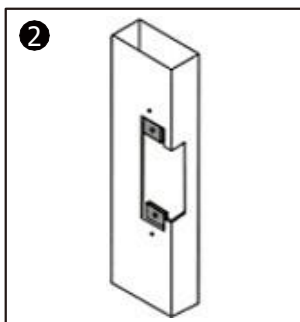
149x28Wx31H(mm)



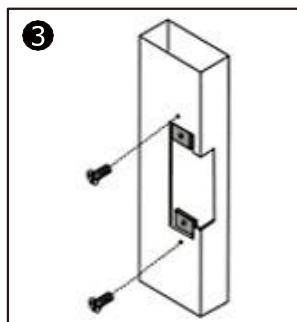
Installation



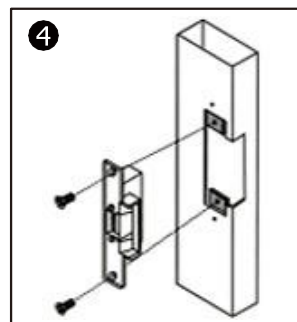
1 Cutting according to the size of the electric lock



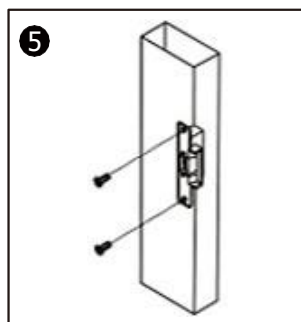
2 Insert extension plate



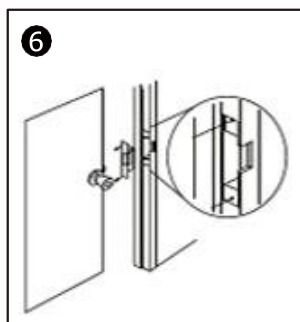
3 Fix extension plate



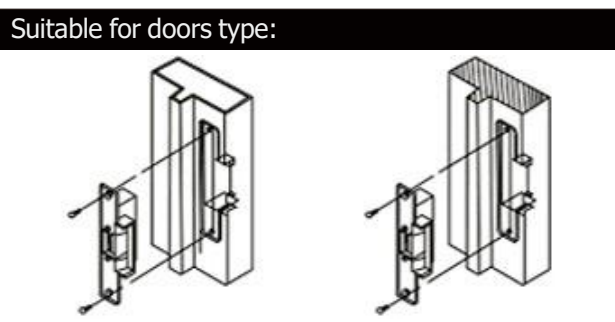
4 After installed, power on and test it



5 Fix strike lock



6 Finish



Metal door frame

Wooden door frame