



C Prox Ltd (inc Quantek)

Unit 11 Callywhite Business Park, Callywhite Lane, Dronfield, S18 2XP

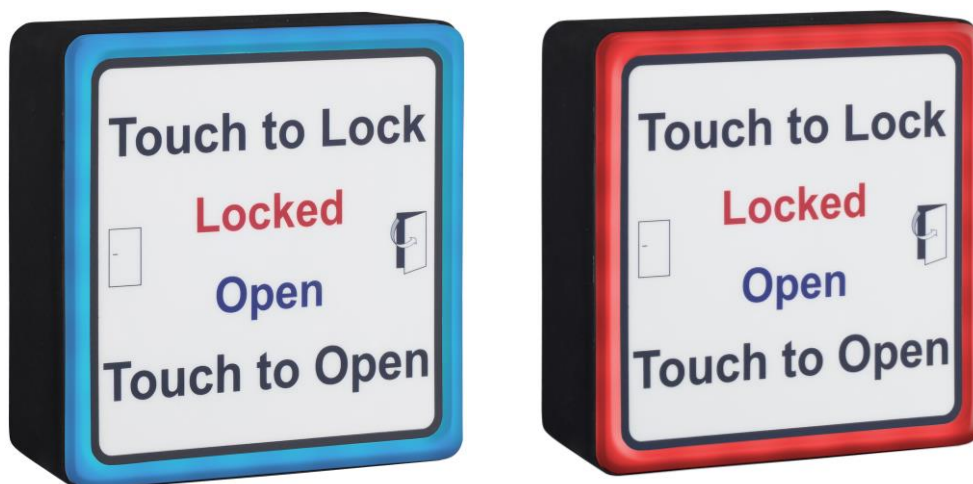
+44(0)1246 417113 sales@cproxltd.com www.quantek.co.uk

Radar Disabled Toilet Locking System - User Guide

Step 1 - If the toilet is vacant, shown by the blue LED, insert the radar key and turn it clockwise (only a quarter turn is required). The door will unlock and start to open. Remove the radar key from the lock.



Step 2 - Once inside the toilet and the door has fully shut behind you, touch the inside sensor (shown below). The door will lock and the light will turn red to indicate that it is locked, the external radar unit will be disabled.



Step 3 - When you are ready to leave, touch the same sensor as above. The door will unlock, the light will turn blue and the door will open.

In the event of an emergency the green break glass can be pressed to exit. The external keyswitch can be used to gain entry from the outside.